



# FXC30FH

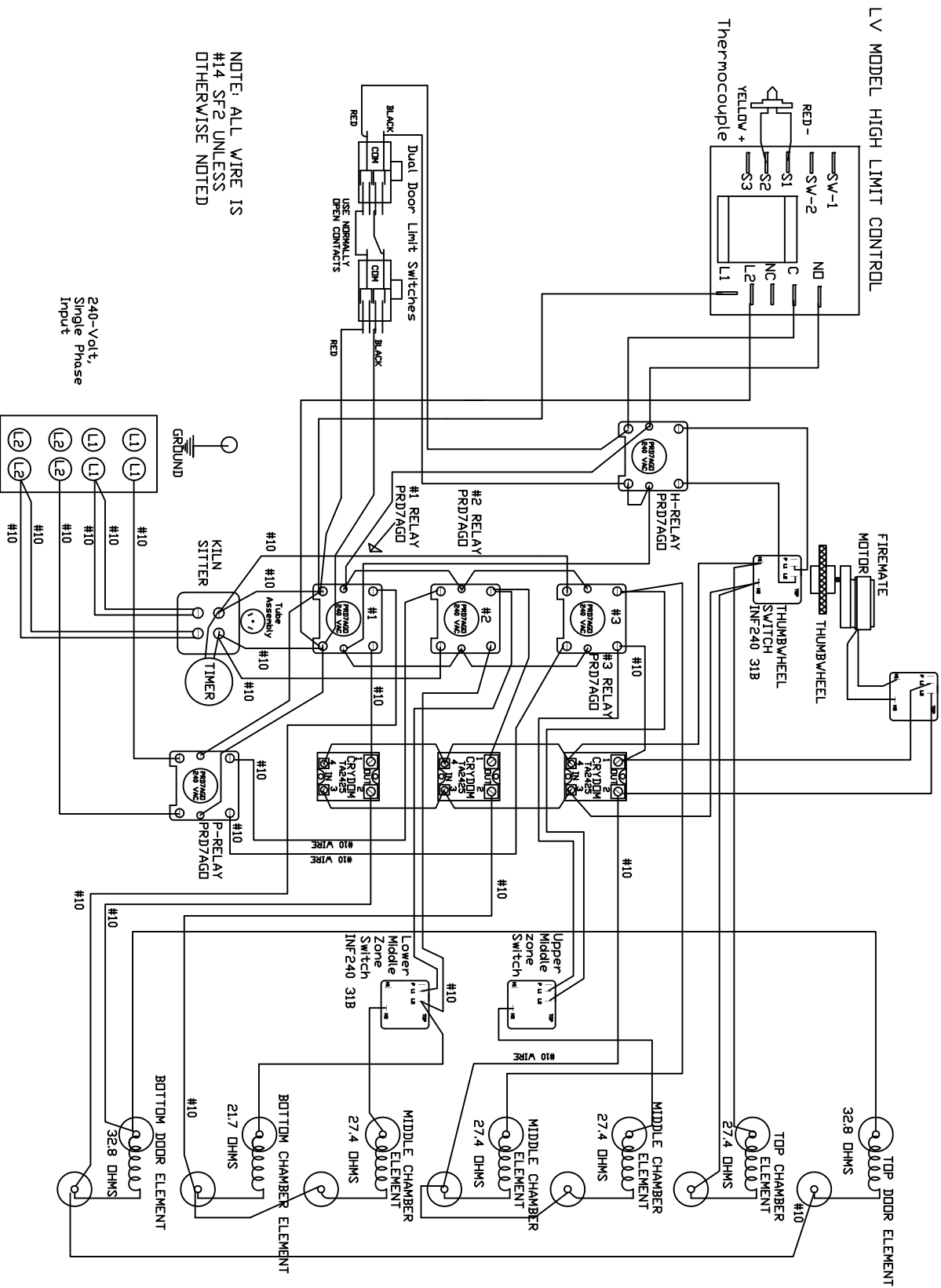
## 240-VOLT, SINGLE PHASE, 61-AMPS

electrical panel  
RIGHT SIDE OF KILN

FXC30FH-240-1Ph-LVJWG  
9/04

CDNE 10 DR 2400 F.

FIREMATE SPEED  
CONTROL SWITCH  
INF240D 953B



NOTE: ALL WIRE IS  
#14 SF2 UNLESS  
OTHERWISE NOTED

240-Volt,  
Single Phase  
Input