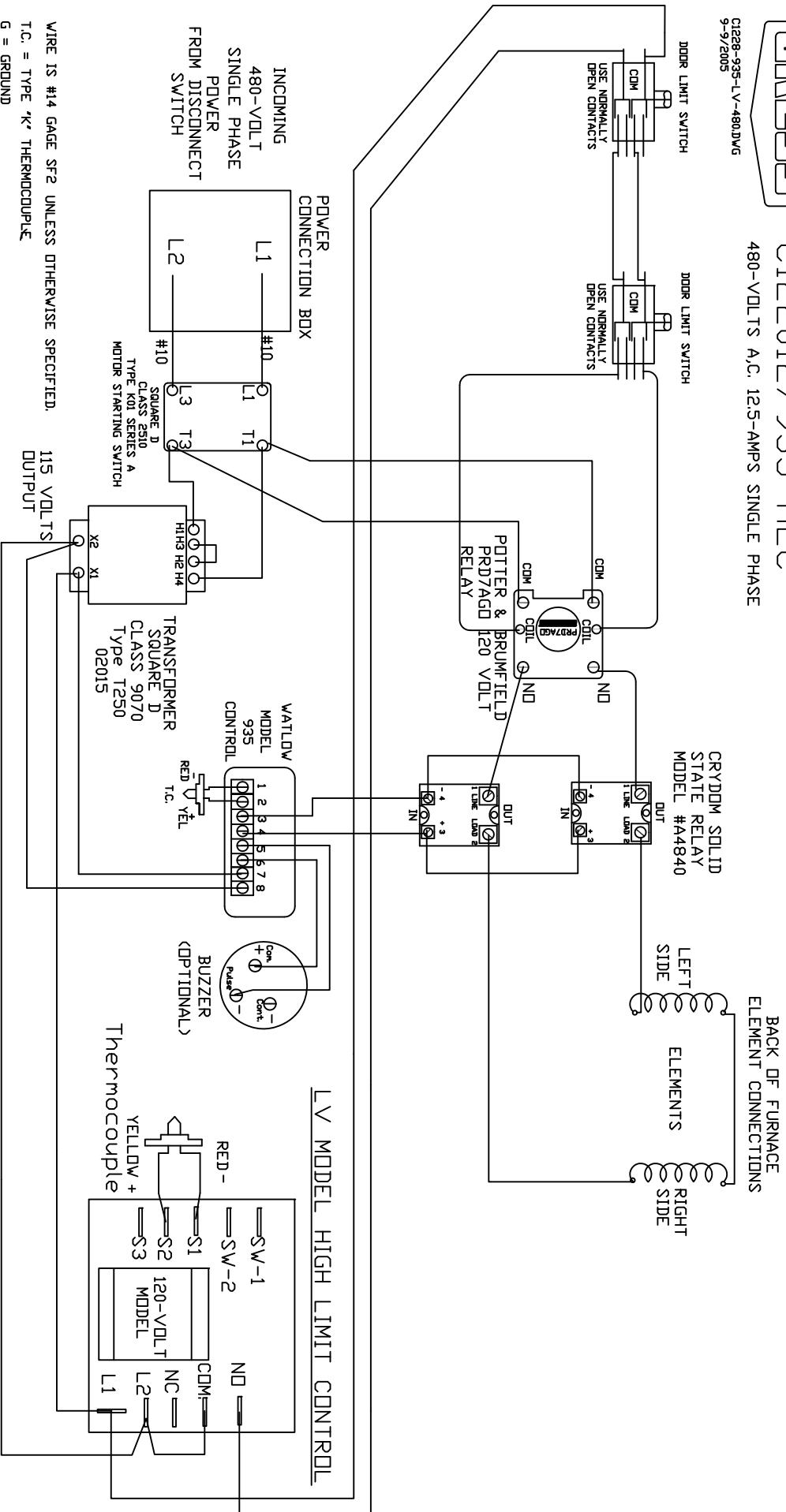




C1228-935-LV-480DV6
9-9/2005

C1228/935-HLC C122012/935-HLC 480-VOLTS A.C. 12.5-AMPS SINGLE PHASE



WIRE IS #14 GAGE SF2 UNLESS OTHERWISE SPECIFIED.
T.C. = TYPE 'K' THERMOCOUPLE
G = GROUND